

# The oldest rocks of the Holy Cross Mountains, Poland – biostratigraphy of the Cambrian Czarna Shale Formation in the vicinity of Kotuszów

ZBIGNIEW SZCZEPANIK<sup>1</sup> and ANNA ŻYLIŃSKA<sup>2</sup>

<sup>1</sup> *Holy Cross Branch of the Polish Geological Institute-National Research Institute, Zgoda 21,  
PL-25-953 Kielce, Poland. E-mail: zbigniew.szczepanik@pgi.gov.pl*

<sup>2</sup> *Faculty of Geology, University of Warsaw, Żwirki i Wigury 93, PL-02-089 Warszawa, Poland.  
E-mail: anna.zylinska@uw.edu.pl*

## ABSTRACT:

Szczepanik, Z. and Żylińska, A. 2016. The oldest rocks of the Holy Cross Mountains, Poland – biostratigraphy of the Cambrian Czarna Shale Formation in the vicinity of Kotuszów. *Acta Geologica Polonica*, **66** (3), 267–281. Warszawa.

Three lower Cambrian acritarch assemblages recognized in four outcrops in the vicinity of Kotuszów in the southernmost part of the Palaeozoic inlier of the Holy Cross Mountains span a stratigraphic interval from the uppermost part of the *Asteridium tornatum*–*Comasphaeridium velvetum* Assemblage Zone to the *Skiagia ornata*–*Fimbriaglomerella membranacea* Assemblage Zone (most probably its lower part). According to current views (Moczydłowska and Yin 2012), this interval corresponds to the upper part of the Fortunian and to Stage 2 of the Terreneuvian Series. The strata yielding the oldest assemblage are thus the oldest precisely documented rocks in the Palaeozoic succession of the Holy Cross Mountains, and the oldest Cambrian rocks exposed on the surface in Poland. The current biostratigraphic scheme for the pre-trilobitic part of the Cambrian System in the Holy Cross Mountains should be modified so that it is based on local acritarch interval subzones.

**Key words:** Cambrian; Fortunian; Terreneuvian; Holy Cross Mountains; Kotuszów; Acritarcha; Biostratigraphy.

## INTRODUCTION

Since the mid-19<sup>th</sup> century, the rocks exposed in the vicinity of the village of Kotuszów have been considered as the oldest strata in the entire Holy Cross Mountains. However, their exact stratigraphic position varied from pre-Cambrian to the upper part of the lower Cambrian in the views of different authors, or even to the Silurian in the oldest reports (see below). According to the most recent biostratigraphic data based on acritarch studies (Kowalczewski *et al.* 1987), the strata correspond to Cambrian Series 2, as do the strata in the

nearby Bazów IG-1 borehole (Lendzion *et al.* 1982). In turn, the existing biostratigraphic scheme for that lowermost part of the Cambrian which is devoid of trilobite fossils is based on rare, in some cases poorly described macrofossils with an extremely patchy distribution (Samsonowicz 1962; Michniak and Rozanov 1969; Żakowa and Jagielska 1970; Lendzion *et al.* 1982; Orłowski and Waksmundzki 1986), this part of the succession being referred to the Terreneuvian, i.e., the basal series of the Cambrian. However, this biostratigraphic scheme is not applicable for other parts of the Palaeozoic inlier of the Holy Cross Mountains. To

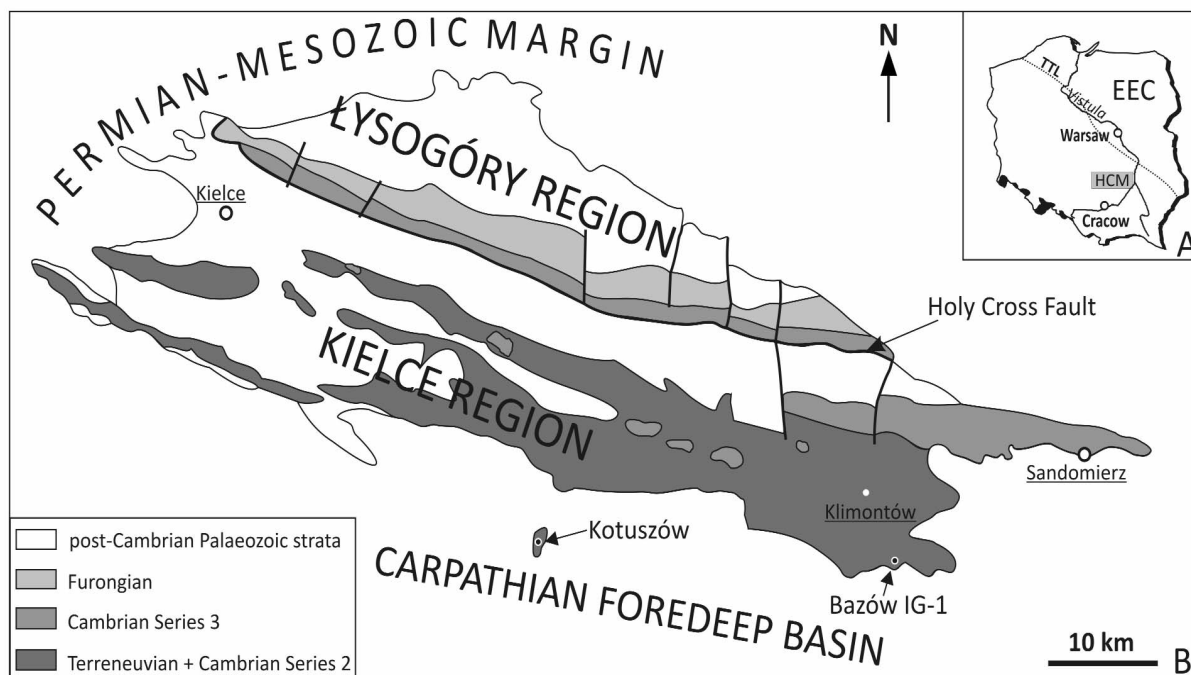
solve these inconsistencies it is necessary to reinvestigate the biostratigraphy of the Czarna Formation using a novel approach to the different fossil assemblages.

Historically, the best exposures yielding macro- and microfossils are located in and around the village of Kotuszów in the southern part of the Holy Cross Mountains, within a small inlier of Cambrian and Devonian rocks surrounded by Miocene sediments (Text-fig. 1). Preliminary analysis of existing and newly collected Cambrian macrofossils from the study area indicates that the low-frequency assemblage is relatively diverse, dominated by algae and hyoliths, with rare bradoriids, protomonaxonid sponges, anomalocaridiids and other, so far unrecognized taxa (Samsonowicz 1962; Orłowski and Waksmundzki 1986; AŻ unpublished data). The assemblage seems to be a mixture of benthic and nektonic organisms, and thus its interpretation requires detailed studies of its allo- or autochthonous components, coupled with geochemical and petrographic assessments (AŻ *et al.* in preparation). Unfortunately, the patchy distribution and low stratigraphic significance of those taxa hampers the application of macrofossils in precise biostratigraphic analyses. Consequently, we have decided to resample the exposed succession for acritarchs and to determine the age of the strata based on microfossil assemblages.

## GEOLOGICAL SETTING

The Holy Cross Mountains (HCM) represent low (the highest peak at 612 m a.s.l.), WNW–ESE oriented hills located in south-central Poland, to the west of the Vistula River (Text-fig. 1A). In terms of geology, these hills represent an area unique in Europe. They contain an almost complete succession of non-metamorphosed Palaeozoic rocks that developed in the direct vicinity of the Teisseyre-Tornquist Line, that has been exposed from underneath a Permian–Mesozoic cover due to Late Cretaceous–Early Paleogene tectonic inversion and uplift (Kutek and Głazek 1972; Krzywiec *et al.* 2009). Thus the area shows successions developed on a basement that is part of the Trans-European Suture Zone (Berthelsen 1992), an important geotectonic domain separating the East European Craton from Variscan Western Europe. The Palaeozoic inlier of the Holy Cross Mountains is surrounded by Permian and Mesozoic formations to the north, west, and south-west (the Permian–Mesozoic margin), whereas to the south and south-east occur the sediments of the last marine transgression in the area, viz. the Miocene strata of the Carpathian Foredeep Basin (e.g., Radwański 1969) (Text-fig. 1B).

The Cambrian succession in the Holy Cross Mountains consists of siliciclastic facies with an estimated thickness of 2500–3500 m (e.g., Orłowski 1988), sub-di-



Text-fig. 1. (A) Sketch-map of Poland with the location of the Holy Cross Mountains (HCM) in relation to the East European Craton (EEC) and the Teisseyre-Tornquist Line (TTL). (B) Geological sketch-map of the HCM showing the distribution of Cambrian deposits. Modified from Orłowski (1975, 1992), with location of Kotuszów and the Bazów IG-1 borehole

vided into a series of lithostratigraphic units and encompassing almost the entire Cambrian System. Intense research on the Cambrian of the Holy Cross Mountains began almost a century ago with contributions mainly by Jan Czarnocki and Jan Samsonowicz (e.g., Samsonowicz 1918; Czarnocki 1919). During the last fifty years or so, research has been focused on trilobites in both taxonomic and stratigraphic aspects (Samsonowicz 1959a, b, c; Orłowski 1964, 1965, 1968a, b, 1974, 1985a, b, 1987), and consequently this fossil group became the most important tool for the Cambrian biostratigraphy of the area. The bio- and lithostratigraphic scheme was refined and synthesized by Orłowski (1975, 1988, 1992), and later new lithostratigraphic units were proposed by Kowalczewski (1990, 1995), Szczepanik *et al.* (2004a, b) and Kowalczewski *et al.* (2006). Increased knowledge of the relationships of Cambrian trilobites resulted in new taxonomic assignments and, subsequently, novel or refined strati-

graphic schemes (Żylińska 2001, 2002, 2013a, b; Żylińska and Masiak 2007; Żylińska and Szczepanik 2009). These were reinforced by a modern approach to the analysis of acritarch assemblages, which began with the reports by Lenzion *et al.* (1982) and Szczepanik (1988, 1997, 2001), and continued in correlation with trilobite assemblages (Żylińska and Szczepanik 2002, 2009; Żylińska *et al.* 2006; Szczepanik and Żylińska 2008, 2012). The recent advances in trilobite studies are strongly supported by sophisticated morphometric analyses (e.g., Żylińska *et al.* 2013; Nowicki 2014, 2015), whereas the research on acritarch assemblages is focused on the establishment of local assemblages for the entire Cambrian succession in the Holy Cross Mountains, and, where possible, tying them to the biostratigraphic scheme based on trilobites. This report on the acritarch assemblages from the Czarna Formation in the Katuszów area further supplements and refines the biostratigraphic scheme.

units authors	Czarna Shale Formation (eastern Holy Cross Mountains)		
	Katuszów beds	Jasień beds	Bazów beds
Samsonowicz (1955, 1960)	<i>Riphean</i>	<i>Lower Cambrian</i>	
Michniak and Orłowski (1963)	<i>Katuszów Stage</i>	<i>sub-Holmia</i>	-
		<b>Jasień Shales</b>	
Pawłowski (1965)	<i>Upper Eocambrian</i>	<i>Lower Cambrian</i>	-
		<i>sub-Holmia</i>	
Pożaryski and Tomczyk (1968)	<i>Riphean</i>	<i>Lower Cambrian</i>	
		<i>sub-Holmia</i>	
Michniak (1969)	<b>Katuszów beds</b>	<b>Jasień beds</b>	<b>Bazów beds</b>
Michniak and Rozanov (1969)			
Orłowski (1975)	<i>Vendian</i>	<i>Lower Cambrian</i>	
		<i>sub-Holmia (Coleoloides + Platysolenites)</i>	
	<b>Katuszów Shale Member</b>	<b>Czarna Shale Formation</b>	
Lenzion <i>et al.</i> (1982)	-	-	<i>Holmia</i>
Kowalski (1983)		<i>Lower Cambrian</i>	
	<i>Sabellidites</i>	<i>Platysolenites</i>	<i>Mobergella</i>
	<b>Katuszów Shale Member</b>	<b>Czarna Shale Formation</b>	
Orłowski (1987)		<i>Lower Cambrian</i>	
	<i>Sabellidites</i>	<i>Coleoloides + Hyolithes-Allatheca</i>	?
	<b>Katuszów Shale Member</b>	<b>Czarna Shale Formation</b>	
Kowalczewski (1995)	<i>sub-Holmia + Holmia</i>	<i>Holmia + Protolenus</i>	

Text-fig. 2. Chrono-, bio- and lithostratigraphic assignments for the components of the Czarna Shale Formation. Grey shading indicates the Precambrian

The Neoproterozoic–Cambrian boundary has not been recognized in the area so far, although rocks of Precambrian age have been radiometrically dated in the basement of the Miechów Basin to the south of the Holy Cross Mountains (Compston *et al.* 1995). Although the rocks exposed in Kotuszów crop out in the small inlier to the south, beyond the southern margin of the main Palaeozoic inlier, they are part of the Czarna Shale Formation, a lowermost Cambrian lithostratigraphic formation known from numerous localities in the southern part of the Palaeozoic inlier (Orłowski 1975; Kowalczewski 1990; Kowalczewski *et al.* 2006). Historically, the Czarna Formation encompasses three informal units, all of which have been distinguished in, or close to, the study area. To date, their stratigraphic order is: 1) the Kotuszów beds (Samsonowicz 1960; Kotuszów Shale Member of Orłowski 1975); 2) the Jasień beds (Jasień Shales of Samsonowicz 1960); and 3) the Bazów beds (Bazów Shales of Samsonowicz 1960). The first two units have their type sections in the study area, although distinguishing between them in the field is practically impossible, and it is recommended that in the future the names of these units should be abandoned. The type succession for the Bazów beds is the Bazów IG-1 borehole, drilled in the early 1960s in the south-eastern tip of the Palaeozoic inlier (Jagielska 1963, 1965; Żak 1963, 1965, 1966; Żakowa and Jagielska 1970; Lendzion *et al.* 1982). The three informal units will be, however, used in the next chapter and in Text-fig. 2 for clarity in presenting the history of their study.

#### PREVIOUS STRATIGRAPHIC ASSESSMENT OF THE KOTUSZÓW ROCKS

Sediments cropping out in the vicinity of Kotuszów were first mentioned in the geological literature in the third decade of the 19<sup>th</sup> century, when they were considered as the basement of all rock complexes in the Holy Cross Mountains, and were assigned to the Silurian (Pusch 1833–1836). A Silurian or younger age was likewise postulated in subsequent papers (Kontkiewicz 1882; Siemiradzki 1887, 1903). After the first report on the discovery of Cambrian rocks at Gieraszwice in the Holy Cross Mountains by Samsonowicz (1918), Czarnocki (1919) attributed the Kotuszów rocks to the Cambrian as well. This view continued until the early 1950s, and was presented for example in standard texts such as in the geological map of the Holy Cross Mountains in the scale 1:300 000 (in Książkiewicz and Samsonowicz 1952). However, Samsonowicz (1955) pointed out that metamorphism

and stronger tectonic deformation are present in the olive green shales outcropping in Kotuszów and thus there are differences compared to the Cambrian of the Holy Cross Mountains. The non-fossiliferous rocks cropping out beneath the Lower Cambrian *Holmia* horizon were attributed to the Precambrian, with an angular unconformity between the Precambrian and Cambrian and a sedimentary hiatus being postulated. Their assignment to the ‘metacarpatic ridge’, extending from the Holy Cross Mountains area to the Dobrogea region along the Black Sea in Romania, was suggested (Samsonowicz 1955). Accordingly, the Kotuszów beds were assigned to the Riphean, Upper Eocambrian, or the Vendian (see Text-fig. 2 for details and references). In turn, the Jasień and Bazów beds of the Czarna Formation were repeatedly assigned to the Lower Cambrian, either to the sub-*Holmia* or to the *Holmia* zones (see Text-fig. 2 for details and references), based on rare finds of macro- or microfossils (e.g., Michniak 1959; Samsonowicz 1962; Jagielska 1963, 1965; Michniak and Rozanov 1969; Żakowa and Jagielska 1970; Lendzion *et al.* 1982; Kowalski 1983). Thus, the Czarna Shale Formation in its original definition (Orłowski 1975) included strata assigned both to the Vendian (Kotuszów beds) and the Lower Cambrian (Jasień and Bazów beds).

In turn, Łydka (1978), based on petrographic studies, suggested that the entire formation may be of Cambrian age. The evidence provided concentrates on the presence of the same type of terrigenous material in all members of the Czarna Formation coupled with an identical degree of secondary changes in the mobile components, but this evidence is not conclusive. This view was, however, independently corroborated by Kowalski (1983) based on studies of acritarch assemblages and trace fossils in several boreholes from south of the Palaeozoic inlier. Although palynomorphs had been recognized in the Kotuszów, Jasień, and Bazów beds (Michniak 1959, 1969; Jagielska 1963, 1965; Żakowa and Jagielska 1970), their allocation to currently recognized genera and species is not possible, as they were described and illustrated prior to the modern concept of the Acritarcha, following the works of Downie *et al.* (1963), Evitt (1963a, b), and Sarjeant (1964). Kowalski (1983) distinguished and illustrated a number of genera and species from boreholes in the vicinity of Kotuszów. His stratigraphic conclusions, however, were restricted to the assignment of the Czarna Shales to the Cambrian System (Text-fig. 2). In reality, the specimen illustrated by Kowalski (1983, pl. 7, fig. 1a–b) as *Baltisphaeridium ornatum* Volk. [currently: *Skiagia ornata* (Volkova) Downie, 1982] from the Korytnica 2 borehole suggests a *Skiagia*-bearing in-

terval of mid-early Cambrian age (e.g., Volkova *et al.* 1979; Moczyłowska 1991). Stratigraphic assignments based on acritarchs by Gozalo Vidal and Małgorzata Moczyłowska were briefly mentioned in Kowalczyński *et al.* (1987), but without photographic documentation. The main conclusion was that the Czarna Shale Formation comprises solely sediments corresponding to different intervals of the Cambrian *Holmia* and probably also the *Protolenus* trilobite zones.

Independently, Orłowski (1987) revised the biostratigraphic scheme of the lower Cambrian in the Holy Cross Mountains. Based on finds of the annelids *Sabellidites* (Kowalski 1983; see Moczyłowska *et al.* 2014 for affinities of *Sabellidites*) and *Coleoloides* sp. (Samsonowicz 1962), hyoliths (Orłowski and Waksmundzki 1986), and the foraminifer *Platysolenites* (Michniak and Rozanov 1969; see McIlroy *et al.* 1994 for affinities of *Platysolenites*), he distinguished four biostratigraphic zones corresponding to the Kotuszów Stage and the sub-*Holmia* interval of Samsonowicz (1960). In ascending order, these are the *Sabellidites*, *Hyalolithes–Allatheca*, and *Coleoloides* zones, and a barren interzone (Text-fig. 2).

## MATERIAL

The samples used in this study were collected from five localities in and around Kotuszów village (Text-fig. 3):

Locality 1: south of the village centre, comprising small exposures in embankments of country roads located to the west of the Kotuszów–Kurozwęki road;

Locality 2: in the village centre; this is an approximately 6 m long and 4 m high exposure on the western embankment of the Czarna River valley;

Locality 3: east of the village centre; this is an approximately 10 m long and 4 m high exposure located on the eastern embankment of the Czarna River valley, about 180 m to the east of the bridge across Czarna River;

Locality 4: north of the village centre, comprising small exposures near artificial ponds opposite the cemetery;

Locality 5: north-east of the village centre and south of Jasień village; this is a series of small exposures along the eastern embankment of the Czarna River valley, at present mostly overgrown by prickly bushes.

A total of 21 samples were tested for their acritarch content, but only 8 yielded a recognizable acritarch flora. Unfortunately, the classical exposure of the Ko-

tuszów shales in Kotuszów village (here: Locality 2), known for the presence of macrofossils, did not yield any acritarchs.

The abundance of the microfloral assemblages was rather low and rarely exceeded 30 to 50 specimens per slide, reaching about 80 specimens in the most productive slides. A characteristic feature of the material studied is the very uneven distribution of the microfossils in the studied rocks. Despite a similar lithology and short distances between the sampling sites, abundant samples often occurred adjacent to completely barren ones.

All recognized palynomorphs are characterized by a preservation with a brown colour, with the shade depending on the thickness of the walls. The colour corresponds to stadia 5+ to 6 of the Thermal Alteration Index (Engelhardt *et al.* 1992) pointing to the oil and gas windows. When compared with other palynomorph assemblages from the Cambrian of the Holy Cross Mountains (Szczepanik 1997, 2007), this is a high maturity index, probably owing to the fact that the Kotuszów rocks are the basal units of the Palaeozoic succession and were deeply buried at various times in their history. Despite high thermal maturity,



Text-fig. 3. Sketch-map of the vicinity of Kotuszów showing the locations of the studied exposures

the preservation state of the acritarch specimens is good, sometimes excellent, which excludes strong diagenesis and intense tectonic deformation of the Kotuszów rocks, contrary to earlier suggestions (e.g., Samsonowicz 1955).

## METHODOLOGY

The samples were subject to classical palynologic maceration. Ca. 100 g samples were macerated first in cold hydrofluoric acid, subsequently in hot hydrochloric acid, filtrated on 15 mm mesh membranes, and macerated once again in cold hydrofluoric acid. The obtained residuum was next centrifuged in heavy liquid. Later, glycerine-gelatine mounts were made, which were analyzed in bright-field microscopy (Olympus BX51 microscope) in magnifications between 300 and 1200. The recognized acritarch specimens were documented as graphic files with the help of a microcamera attached to a computer.

## BIOSTRATIGRAPHICAL BACKGROUND

The palynomorph assemblages recognized in the Kotuszów succession largely correspond to lower Cambrian microfloral acritarch associations as known from different parts of the world (Text-fig. 4). In the neighbourhood of the Holy Cross Mountains, similar acritarchs have been recognized in boreholes in the basement of the Miechów Basin (Pozaryski *et al.* 1981), in over a dozen boreholes pierced in the north-eastern part of the Carpathian Foredeep (Stalowa Wola–Lubaczów zone; Jachowicz-Zdanowska 2011), in the Upper Silesia Block (e.g., Moczyłowska 1998; Jachowicz-Zdanowska 2013) and the structurally related Brno Block (Jachowicz and Prichystal 1997; Fatka and Vavrdová 1998; Vavrdová and Beck 2001; Vavrdová 2006). Key studies for the development of global lower Cambrian acritarch biostratigraphy include those conducted on the Lublin Slope of the EEC (Volkova 1969; Volkova *et al.* 1979, 1983; Moczyłowska and Vidal 1986; Moczyłowska 1989). Acritarchs with a similar age are known from other parts of the EEC in Poland (e.g., Moczyłowska 1981; Jankauskas and Lendzion 1992; Szczepanik 2000), eastern Baltic region (e.g., Volkova 1968; Yankauskas 1972, 1975; Yankauskas and Posti 1976; Paskeviciene 1980), and Scandinavia, both from the margin of the Baltic Shield and from the Caledonides (e.g., Vidal 1981; Tynni 1982; Moczyłowska and Vidal 1986, 1992;

Hagenfeldt 1989; Eklund 1990; Vidal and Nystuen 1990; Vidal and Moczyłowska 1996; Moczyłowska *et al.* 2001; Högström *et al.* 2013). Comparable assemblages are known from the Cambrian of Volhynia (Kiryanov 1974; Volkova *et al.* 1979, 1983) and the Moscow Syncline (Volkova 1996). Correlatives of the lower Cambrian microfloral associations known from the Baltic area have also been noted in Siberia (e.g., Ogurtsova 1977; Vidal *et al.* 1995; Kiryanov 2005). Typical lower Cambrian acritarch assemblages have been recognized in southern Australia (East Gondwana; e.g., Zang *et al.* 2007), southern China (Yangtze Block; e.g., Zang 1992), and Iberia (West Gondwana; Palacios and Vidal 1992). This type of microflora is known also from Laurentia (e.g., Downie 1982), East Avalonia (Vanguetaine 1992; Bruck and Vanguetaine 2004), and West Avalonia (Palacios *et al.* 2011, 2014), although in the latter case there are serious doubts concerning the definition of particular assemblages, and their correlation with SSF zones and geochronological dates (Landing *et al.* 2013).

The succession of distinctive assemblages of lower Cambrian microflora and their wide geographic range allows their application as a rough correlation tool for the often unfossiliferous rock series in which they occur. However, there are a number of obstacles that restrict the precise determination of the chronostratigraphic position of the acritarch zones, of which some have been extensively disputed recently (e.g., Moczyłowska and Yin 2012; Landing *et al.* 2013). A significant issue in the recognition and application of acritarch zones is the often imprecise definition of particular zones and their different interpretation by various authors. Initially recognized on the Lublin Slope of the EEC, but also in other parts of the craton, the stratigraphic sequence present there (Moczyłowska and Vidal 1986, 1988; Moczyłowska 1989) was presented by Moczyłowska (1991) as a partly formalized acritarch zonation. Three formal zones: *Asteridium tornatum*–*Comasphaeridium velvetum*, *Skiagia ornata*–*Fimbriaglomerella membranacea* and *Heliosphaeridium dissimulare*–*Skiagia ciliosa* have been distinguished as assemblage zones and defined by the general composition and contribution of particular taxa. Such definition facilitates recognizing the particular microfloristic associations and allows for determining the rough stratigraphic position of the sequences, but hampers precise location of stratigraphic boundaries and may sometimes lead to different stratigraphic interpretations. A good illustration of the problems related to the interpretation of zones defined in this manner may be an example

Series	Stages (Ma)	Western Avalonia	Baltica		Upper Silesia	Local biostratigraphy (this paper)	Litostratigraphy (Samsonowicz 1960; Orłowski 1975, 1988)
		New Brunswick (modified after Palacios <i>et al.</i> 2011)	Microfossil zones (Moczyłowska 1991)	Faunal zones	Microfossil zones (Jachowicz-Zdanowska 2013)		
Series 2	510 Ma - Stage 4		<i>Volkovia dentifera</i> - <i>Liepaina plana</i>	<i>Protolenus Ornamentaspis</i>	BAMA VI <i>Volkovia dentifera</i> - <i>Liepaina plana</i>		↑?
	Stage 3	<i>Heliosphaeridium-Skiagia*</i>	<i>Heliosphaeridium dissimilare</i> - <i>Skiagia ciliosa</i>	<i>Holmia kjerulfi</i> <i>Holmia inusitata</i>	BAMA V <i>Skiagia</i> - <i>Eklundia varia</i> BAMA IV <i>Skiagia</i> - <i>Eklundia complanata</i>		
Terreneuvian	520 Ma - Stage 2	<i>Skiagia-Fimbriaglomerella*</i>	<i>Skiagia ornata</i> - <i>Fimbriaglomerella membranacea</i>	<i>Schmidtellus mickwitzi</i> <i>Mobergella Rusophycus</i>	BAMA III <i>Ichnosphaera flexuosa</i> - <i>Comasphaeridium molliculum</i>	LA 3 LA 2 LA 1	Basów beds Jareńsk beds Kotuszów beds Czarna Shale Formation
	531 Ma - Fortunian Stage		<i>Asteridium tornatum</i> - <i>Comasphaeridium velvetum</i>	<i>Platysolenites antiquissimus</i> <i>(Treptichnus pedum)</i>	? BAMA II <i>Asteridium tornatum</i> - <i>Comasphaeridium velvetum</i> ? BAMA I - <i>P. antiquum</i> - <i>Pseudotasmanites</i>		
	541 Ma -						

Text-fig. 4. Biostratigraphic and correlation scheme for the lower Cambrian, based on acritarchs (modified from Moczyłowska and Yin 2012 and Jachowicz-Zdanowska 2013, with supplementation from Palacios *et al.* 2011), showing the stratigraphic position of the recognized local biostratigraphical units. The asterisk (\*) for the upper two acritarch zones recognized in New Brunswick by Palacios *et al.* (2011) marks uncertainties in the recognition of these zones, as indicated by Landing *et al.* (2013). The 528.1 Ma date corresponds to the 531 Ma date of Moczyłowska and Yin (2012), recalculated by Compston *et al.* (2008) (see also Landing *et al.* 2013)

from the lower Cambrian of the Cantabrian Zone in Spain (Palacios and Vidal 1992), where two zones were distinguished, for which representatives of *Skiagia* are index taxa despite the lack of acritarchs representing the genus *Skiagia*. The assignment of an acritarch assemblage from the Chapel Island Formation in New Brunswick to the *Skiagia-Fimbriaglomerella* Zone (Palacios *et al.* 2011) has also been disputed, as most elements of this assemblage occur in the overlying *Heliosphaeridium-Skiagia* Zone, whereas the assignment of the two index taxa raises doubts (Landing *et al.* 2013). The *Asteridium tornatum-Comasphaeridium velvetum* Zone is often distinguished when the relevant samples contain simple microfloral assemblages without the index taxa but with numerous specimens of *Granomarginata*. In this case, the zone is sometimes replaced by a similar, but otherwise defined zone (Jankauskas and Lendzion 1992), or additional subzones are proposed (Palacios *et al.* 2014).

Another concern is the chronostratigraphic position of the distinguished acritarch zones. This issue has been extensively discussed over the last few years (Moczyłowska and Yin 2012; Landing *et al.* 2013). The correction of the chronostratigraphic position of the *Skiagia ornata-Fimbriaglomerella membranacea* Zone and its correlation with the upper part of the Ter-

reneuvian (Moczyłowska and Yin 2012) is of key significance for Cambrian stratigraphy in the Holy Cross Mountains.

## LOCAL BIOSTRATIGRAPHY

### Local assemblage 1

The assemblage was recognized in one sample collected from Locality 1. It is a low-abundance paly-nomorph assemblage (30 specimens per slide), composed of numerous sphaeromorphs such as *Leiosphaeridia* sp. (Pl. 1, Figs 1–5), accompanied by representatives of *Granomarginata* (Pl. 1, Figs 15–17), *Comasphaeridium* (Pl. 1, Figs 13, 14, 18, 19), and acritarchs of the genus *Lophosphaeridium*, generally with small surface sculpture elements (mainly *L. tentativum*; Pl. 1, Fig. 22). The composition of the assemblage resembles a typical association of the Terreneuvian *Asteridium tornatum-Comasphaeridium velvetum* Zone, distinguished on the Lublin Slope of the EEC (Moczyłowska 1991), in Upper Silesia (Jachowicz-Zdanowska 2013), and in the Brno Block (Vavrdová *et al.* 2003; Vavrdová 2006). The presence of this zone as exemplified by the studied assemblage is also supported by the occurrence of *Comasphaeridium* cf. *velvetum* (Pl. 1, Figs. 13, 14) and *As-*

*teridium tornatum* (Pl. 1, Fig. 23). However, the assemblage contains representatives of the genus *Fimbriaglomerella*, including *F. membranacea* (Pl. 1, Figs 9, 10), which are characteristic of the overlying *Skiagia ornata–Fimbriaglomerella membranacea* Zone in the scheme proposed by Moczyłowska (1991). The studied sample, however, lacks other taxa typical of this zone. Both zones distinguished by Moczyłowska (1991) are defined as assemblage zones, and their definitions are based on characteristic contributions of particular taxa in the assemblages rather than on the stratigraphic ranges, so that the association recognized in Locality 1 appears to characterize the *Asteridium tornatum–Comasphaeridium velvetum* Zone.

The *Asteridium tornatum–Comasphaeridium velvetum* Zone was recognized in a number of boreholes drilled in the Lublin Slope of the EEC (Moczyłowska 1991) and in the north-eastern part of the Carpathian Foredeep (Szczepanik 2009). Typical assemblages of this zone have also been noted in the Upper Silesia Block (e.g., Jachowicz-Zdanowska 2013) and southern Moravia (Jachowicz and Prichystal 1997; Vavrdová and Beck 2001; Vavrdová 2006). A fully developed assemblage of this zone was also found in lower Cambrian successions drilled in the western part of the Peribaltic Syncline (Szczepanik 2000). Among other parts of the EEC, assemblages of this type are known from the Moscow Syncline (Volkova 1996), Volhynia, and the Baltic area (e.g., Volkova *et al.* 1979, 1983; Jankauskas and Lendzion 1992). Palacios *et al.* (2014) have indicated that the well-developed *Asteridium tornatum–Comasphaeridium velvetum* Zone does not appear directly at the base of the Terreneuvian in the GSSP locality in Newfoundland, but is preceded by a low-diversity association composed mainly of *Granomarginata*. Interestingly, a similar situation is observed in some sections documented by Moczyłowska (1991: appendix 6, p. 93) and proposed for sections from northern Norway (Finnmark) (Palacios *et al.* 2014). Most probably, this association is a correlative of the oldest Cambrian BAMA I subzone distinguished for the Brunovistulicum by Jachowicz-Zdanowska (2013). According to the modified scheme of Moczyłowska and Yin (2012), the *Asteridium tornatum–Comasphaeridium velvetum* Zone corresponds to the lower Terreneuvian (Fortunian Stage). The assemblage from Kotuszów, transitional between the *Asteridium tornatum–Comasphaeridium velvetum* and *Skiagia ornata–Fimbriaglomerella membranacea* assemblages may correspond to the boundary interval between the Fortunian Stage and the Stage 2 of the Terreneuvian, and the strata in which it occurs can be considered as the oldest documented Cambrian (and Palaeozoic) rocks in the Holy Cross Mountains.

## Local assemblage 2

The assemblage was recovered from two samples collected in Localities 3 and 4. The relatively abundant sample from Locality 3 contains quite numerous and morphologically diverse representatives of *Lophosphaeridium* (Pl. 2, Figs 18–23), with the predominant *L. truncatum* (Pl. 2, Figs 20–23) and representatives of *Globosphaeridium cerinum* (Pl. 2, Figs 24–27). The palynomorphs are accompanied by taxa occurring in the older assemblage (although less abundant), such as *Leiosphaeridia* sp. (Pl. 2, Figs 2–4), *Tasmanites* sp. (Pl. 2, Fig. 5), *Comasphaeridium* spp. (Pl. 2, Figs. 10–13), *Granomarginata* spp. (Pl. 2, Figs. 14–16), palynomorphs identified as *Fimbriaglomerella* spp. (Pl. 2, Fig. 17), *Cymatiosphaera* sp. (Pl. 2, Fig. 9), and representatives of probably new acritarch genera (Pl. 2, Figs 6–8). The low-abundance palynomorph assemblage from Locality 4 is very similar to that recorded in Locality 3. It contains numerous diverse acritarchs of the genus *Lophosphaeridium* (Pl. 3, Figs 6–13), with *L. dubium* (Pl. 3, Figs 8–10) and *L. truncatum* (Pl. 3, Figs 11–13), *?Ichnosphaera* sp. (Pl. 3, Fig. 22) and *?Skiagia* sp. (Pl. 3, Fig. 21). These taxa are characteristic of the *Skiagia ornata–Fimbriaglomerella membranacea* Assemblage Zone. The presence of the relatively abundant *Fimbriaglomerella* cf. *membranacea* (Pl. 3, Figs 18–20) also supports such an age assignment. *Comasphaeridium mollicum* (Pl. 3, Fig. 15) is the index taxon of the contemporary *Ichnosphaera flexuosa–Comasphaeridium mollicum* Assemblage Zone (Jachowicz-Zdanowska 2013). This is the first assemblage from the Kotuszów area with specimens assigned to *?Ichnosphaera* sp. and *?Skiagia* sp., which may indicate a slightly younger age of this series in Locality 4 in comparison to the strata in Locality 3, although this supposition requires further studies.

The assemblages from Localities 3 and 4 are similar to those characterizing the *Skiagia ornata–Fimbriaglomerella membranacea* Assemblage Zone (Moczyłowska 1991) and the *Ichnosphaera flexuosa–Comasphaeridium mollicum* Assemblage Zone distinguished on the Upper Silesia Block (Jachowicz-Zdanowska 2013). However, they contain only a few specimens of the genus *Skiagia*, which is also very rare in assemblages from Upper Silesia (Jachowicz-Zdanowska 2013). Assemblages characteristic of this zone commonly occur on all Cambrian continents (see compilations in Moczyłowska and Yin 2012; Landing *et al.* 2013) (Text-fig. 4). Accordingly, the studied assemblage may correspond to the lower part of the *Skiagia ornata–Fimbriaglomerella membranacea* and *Ichnosphaera flexuosa–Comasphaeridium mollicum* assemblage zones and, after Moczyłowska and Yin (2012), may be correlated with the Cambrian Stage 2 (upper Terreneuvian).



Worth noting is the fact that the studied assemblage has been assigned to the *Skiagia ornata*–*Fimbriaglomerella membranacea* Zone despite the very scarce occurrence of *Skiagia*. In most known successions, representatives of *Fimbriaglomerella*, *Skiagia* and *Globosphaeridium* usually appear simultaneously. However, in some borehole logs from the Lublin Slope of the EEC (e.g., the Parczew IG-1 Borehole; Moczyłowska 1991), specimens of *Fimbriaglomerella* and *Globosphaeridium cerinum* appear below specimens of *Skiagia*. A similar situation exists in boreholes pierced in the Upper Silesia Block (see Jachowicz-Zdanowska 2013, p. 31), where specimens of *Skiagia* are extremely scarce, and in Fennoscandia (Hagenfeldt 1989: p. 88). Worth mentioning is the lower Cambrian acritarch microflora from the Cantabrian Zone in Spain (Palacios and Vidal 1992), where *Skiagia* does not occur at all, although the assemblages contain many other typical elements supposedly characteristic of this type of lower Cambrian palynoflora.

### Local assemblage 3

A relatively abundant (up to 70 specimens in the slide) and more diverse assemblage has been recognized in Locality 5. The assemblage generally comprises the same palynomorphs as the previous samples, but contains for the first time acritarchs representing *Skiagia* spp. (Pl. 4, Figs 29, 31, 33–36) and a single specimen of ?*Ichnosphaera* sp. (Pl. 4, Fig. 32). The assemblage displays features of a fully developed acritarch association as known from the *Skiagia ornata*–*Fimbriaglomerella membranacea* and *Ichnosphaera flexuosa*–*Comasphaeridium mollicum* assemblage zones and may be correlated with the middle part of Cambrian Stage 2, according to the revised scheme by Moczyłowska and Yin (2012).

This fully developed acritarch association of the *Skiagia ornata*–*Fimbriaglomerella membranacea* Zone can be correlated with similar associations in many parts of the world (e.g., Volkova *et al.* 1979, 1983; Moczyłowska and Vidal 1986; Moczyłowska 1989, 1991, 1998). It corresponds to the local “assemblage A” of Eklund (1990) and the BAMA III *Ichnosphaera flexuosa*–*Comasphaeridium mollicum* Zone proposed by Jachowicz-Zdanowska (2013). However, compared with the latter unit, the association from Kotuszów lacks forms that can be assigned to *Ichnosphaera* with certainty. This may be a result of ecological or geographic factors, but another explanation is that samples from Locality 5 contain a relatively low-abundance assemblage of palynomorphs, among which only slightly more than a dozen represent “spiny” (acanthomorph) acritarchs.

Additional data and more abundant samples may allow recognition of more convincing *Ichnosphaera* specimens, all the more because this taxon is present in other samples from the Holy Cross Mountains area (ZS unpublished data).

### Biostratigraphic conclusions

The sequence of acritarch assemblages recognized in the vicinity of Kotuszów indicates the presence of an interval encompassing the upper part of the *Asteridium tornatum*–*Comasphaeridium velvetum* Zone to the *Skiagia ornata*–*Fimbriaglomerella membranacea* Zone (probably its middle part), corresponding to the mid and upper part of the Terreneuvian Series (Moczyłowska and Yin 2012). It thus represents a relatively short stratigraphic interval in a rather thick (c. 800 m according to Orłowski 1988) sequence of mudstones, indicating a relatively high sedimentation rate, although it should be taken into account that the lower Cambrian rock series in the southern part of the Holy Cross Mountains are strongly folded and contain numerous tectonic repetitions (Lendzion *et al.* 1982). Analysis of the acritarch flora with the successive appearance of *Fimbriaglomerella*, *Globosphaeridium* and *Skiagia* may be used to distinguish local acritarch interval subzones. Owing to the scarcity of macrofossils in the lowermost part of the Cambrian sequence in the Holy Cross Mountains, this scheme may become a useful stratigraphic tool for these strata. Similar evolution of the studied acritarch assemblages in the Holy Cross Mountains and in the Upper Silesia Block and Spain (see above for references) may confirm the palaeogeographic position of the Holy Cross margin of Baltica directed towards Perigondwana and Gondwana, as postulated by Cambrian Series 2 trilobite assemblages (Żylińska 2013a, b).

### CONCLUSIONS

1. Cambrian strata exposed in the Kotuszów area, southern Holy Cross Mountains, yield three local acritarch assemblages, corresponding to the uppermost part of the *Asteridium tornatum*–*Comasphaeridium velvetum* Zone and the *Skiagia ornata*–*Fimbriaglomerella membranacea* Zone (most probably its lower and middle part) that, according to the scheme proposed by Moczyłowska and Yin (2012), span the mid-Terreneuvian, from the late Fortunian Stage through to the middle part of the Cambrian Stage 2. Correlation with the trilobite-bearing beds of the Ociesęki Sandstone Formation is not possible due to the lack of data on acritarchs from the latter unit. In turn, correlation with the trilobite-

bearing beds of the Kamieniec Shale Formation (Szczepanik and Żylińska 2012) indicates that the youngest local assemblage in Kotuszów is older than the oldest known assemblage from that formation. The large thickness of the sequence corresponds to a relatively short period, which appears to indicate a high sedimentation rate, although tectonic repetitions are also possible.

2. Rocks exposed to the south of Kotuszów (Locality 1) represent the upper part of the Fortunian Stage of the Terreneuvian Series, and are the oldest documented rocks in the Palaeozoic succession of the Holy Cross Mountains and the oldest documented rocks exposed at the surface in Poland.

3. The lower part of the *Skiagia ornata*–*Fimbriaglomerella membranacea* Assemblage Zone contains very scarce representatives of *Skiagia* (observations in the study area and data from a few sections studied by Hagenfeldt 1989, Moczyłowska 1991, and Jachowicz-Zdanowska 2013). New data might make it possible to distinguish this part of the zone as a distinct subzone.

3. The current biostratigraphic scheme for the lower Cambrian of the Holy Cross Mountains, based on rare and patchily occurring macrofossils with limited stratigraphic value, should be modified. Future studies should focus on defining lowermost Cambrian local acritarch interval subzones, based on the FADs of the successively appearing acritarch genera *Fimbriaglomerella*, *Globosphaeridium*, and *Skiagia*, in other parts of the Palaeozoic inlier of the Holy Cross Mountains.

## Acknowledgements

The research was financed by the statutory funds of the Polish Geological Institute – National Research Institute (subject no. 61.2401.1302.00.0 – Cambrian and Ordovician acritarchs from the Holy Cross Mountains and their significance for current geological research; ZS) and by the Institute of Geology, Faculty of Geology, University of Warsaw (individual grant to AŻ). The final version of the paper greatly benefited from the constructive reviews by Gerd Geyer (Würzburg) and Thomas Servais (Lille), for which we are extremely grateful.

## REFERENCES

- Berthelsen, A. 1992. From Precambrian to Variscan Europe. In: D. Blundell, R. Freeman and S. Muller (Eds), *A continent revealed: the European geotraverse*, pp. 153–164. Cambridge University Press.
- Bruck, P.M. and Vanguetstaine, M. 2004. Acritarchs from the Lower Palaeozoic succession on the south County Wexford coast, Ireland: new age constraints for the Cullenstown Formation and the Cahore and Ribband Groups. *Geological Journal*, **39**, 199–224.
- Compston, W., Sambridge, M.S., Reinfrank, R.F., Moczyłowska, M., Vidal, G. and Claesson, S. 1995. Numerical ages of volcanic rocks and the earliest faunal zone within the Late Precambrian of east Poland. *Journal of the Geological Society, London*, **152**, 599–611.
- Compston, W., Zhang, Z., Cooper, D.A., Ma, G. and Jenkins, R.J.F. 2008. Further SHRIMP geochronology on the Early Cambrian of South China. *American Journal of Science*, **308**, 399–420.
- Czarnocki, J. 1919. Stratygrafia i tektonika Gór Świętokrzyskich. *Prace Towarzystwa Naukowego Warszawskiego*, **28**, 1–172.
- Downie, C. 1982. Lower Cambrian acritarchs from Scotland, Norway, Greenland and Canada. *Transactions of the Royal Society of Edinburgh: Earth Sciences*, **72**, 257–285.
- Downie, C., Evitt, W.R. and Sarjeant, W.A.S. 1963. Dinoflagellates, hystrichospheres, and the classification of the acritarchs. *Stanford University Publications. Geological Sciences*, **7**, 1–16.
- Eklund, C. 1990. Lower Cambrian acritarch stratigraphy of the Barstad 2 core, Östergötland, Sweden. *GFF*, **112**, 19–44.
- Engelhardt, D., Wood, G.D. and Barker, G.W. 1992. AMOCO STANDARD Thermal Alternation Index – TAI, unpublished report.
- Evitt, W.R. 1963a. A discussion and proposals concerning fossil dinoflagellates, hystrichospheres, and acritarchs. I. *Proceedings of the National Academy of Sciences of the United States of America*, **49**, 158–164.
- Evitt, W.R. 1963b. A discussion and proposals concerning fossil dinoflagellates, hystrichospheres, and acritarchs. II. *Proceedings of the National Academy of Sciences of the United States of America*, **49**, 298–302.
- Fatka, O. and Vavrdová, M. 1998. Early Cambrian Acritarcha from sediments underlying the Devonian in Moravia (Menin 1 borehole, Czech Republic). *Bulletin of the Czech Geological Survey*, **73**, 55–60.
- Hagenfeldt, S.E. 1989. Lower Cambrian acritarchs from the Baltic Depression and south-central Sweden, taxonomy, stratigraphy. *Stockholm Contributions in Geology*, **41**, 1–176.
- Högström, A.E.S., Jensen, S., Palacios, T. and Ebbestad, J.O.R. 2013. New information on the Ediacaran–Cambrian transition in the Vestertana Group, Finnmark, northern Norway, from trace fossils and organic-walled microfossils. *Norwegian Journal of Geology*, **93**, 95–106.
- Jachowicz, M. and Prichystal, A. 1997. Lower Cambrian sediments in deep boreholes in South Moravia. *Bulletin of the Czech Geological Survey*, **72**, 329–332.
- Jachowicz-Zdanowska, M. 2011. Cambrian organic microfossils at the border area of the East- and West-European

- Platforms (SE Poland and Western Ukraine). *Annales Societatis Geologorum Poloniae*, **81**, 241–267.
- Jachowicz-Zdanowska, M. 2013. Cambrian phytoplankton of the Brunovistulicum – taxonomy and biostratigraphy. *Special Papers of the Polish Geological Institute*, **28**, 1–79.
- Jagielska, L. 1963. Preliminary results of microspore studies in the Bazów Borehole. *Kwartalnik Geologiczny*, **7**, 736–737. [In Polish]
- Jagielska, L. 1965. New data on Eocambrian and lowermost Cambrian microflora from the Klimontów Anticlinorium. *Kwartalnik Geologiczny*, **9**, 499–509. [In Polish]
- Jankauskas, T.V. and Lenzion, K. 1992. Lower and Middle Cambrian acritarch-based biozonation of the Baltic Syneclise and adjacent areas (East European Platform). *Przegląd Geologiczny*, **40**, 519–525.
- Kiryranov, V.V. 1974. New acritarchs from the Cambrian deposits of Volhynia. *Paleontologicheskij Zhurnal*, **2**, 117–129. [In Russian]
- Kiryranov, V.V. 2005. Rovno and Lontova acritarch assemblages in the Precambrian/Cambrian boundary deposits of the Western Anabar region (Kotuy River). In: XI All Russian Palynological Conference “Palynology – theory and applications”. Proceedings of the conference, pp. 111–112.
- Kontkiewicz, S. 1882. Sprawozdanie z badań geologicznych, dokonanych w 1880 roku w południowej części guberni Kieleckiej. *Pamiętnik Fizjograficzny*, **2**, 175–202.
- Kowalczewski, Z. 1990. Coarse-grained Cambrian rocks in mid-southern Poland (lithostratigraphy, tectonics, palaeogeography). *Prace Państwowego Instytutu Geologicznego*, **131**, 5–82. [In Polish]
- Kowalczewski, Z. 1995. Fundamental stratigraphic problem of the Cambrian in the Holy Cross Mts. *Geological Quarterly*, **39**, 449–470.
- Kowalczewski, Z., Kuleta, M. and Moczyłowska, M. 1987. New data on the Lower Cambrian in the vicinity of Katuszów and Korytnica in the Holy Cross Mountains. *Kwartalnik Geologiczny*, **31**, 225–226. [In Polish]
- Kowalczewski, Z., Żylińska, A. and Szczepanik, Z. 2006. Kambr w Górach Świętokrzyskich. In: S. Skompski and A. Żylińska (Eds), *Procesy i zdarzenia w historii geologicznej Gór Świętokrzyskich*. 77 Zjazd Naukowy Polskiego Towarzystwa Geologicznego, pp. 14–27.
- Kowalski, W.R. 1983. Stratigraphy of the Upper Precambrian and lowest Cambrian strata in southern Poland. *Acta Geologica Polonica*, **33**, 183–218.
- Krzywiec, P., Gutowski, J., Walaszczyk, I., Wróbel, G. and Wybraniec, S. 2009. Tectonostratigraphic model of the Late Cretaceous inversion along the Nowe Miasto-Zawichost Fault Zone, SE Mid-Polish Trough. *Geological Quarterly*, **53**, 27–48.
- Książkiewicz, M. and Samsonowicz, J. 1952. *Zarys Geologii Polski*, 1–224 + 2 maps. Państwowe Wydawnictwo Naukowe; Warszawa.
- Kutek, J. and Głazek, J. 1972. The Holy Cross area, Central Poland, in the Alpine cycle. *Acta Geologica Polonica*, **22**, 603–652.
- Landing, E., Geyer, G., Brasier, M.D. and Bowring, S.A. 2013. Cambrian Evolutionary Radiation: Context, correlation, and chronostratigraphy – overcoming deficiencies of the first appearance datum (FAD) concept. *Earth-Science Reviews*, **123**, 133–172.
- Lenzcion, K., Moczyłowska, M. and Żakowa, H. 1982. A new look at the Bazów Cambrian sequence (southern Holy Cross Mts). *Bulletin de l'Académie Polonaise des Sciences, Série des Sciences de la Terre*, **30**, 67–75.
- Łydka, K. 1978. The oldest rocks in the Holy Cross Mts (Central Poland). *Bulletin de l'Académie Polonaise des Sciences, Série des Sciences de la Terre*, **26**, 183–189.
- McIlroy, D., Green, O.R. and Brasier, M.D. 1994. The world's oldest foraminiferans. *Microscopy and Analysis*, **44**, 13–15.
- Michniak, R. 1959. Notes on the petrography and micropalaeophytology in the oldest strata of the Holy Cross Mts. *Bulletin de l'Académie Polonaise des Sciences, Série des sciences chimiques, géologiques et géographiques*, **7**, 457–462.
- Michniak, R. 1969. Petrography of the Upper Precambrian (Riphean) and Cambrian in the eastern part of the Holy Cross Mountains. *Studia Geologica Polonica*, **30**, 7–94. [In Polish]
- Michniak, R. and Orłowski, S. 1963. Remarks on the stratigraphical table of the Precambrian and Cambrian in the Święty Krzyż Mts. *Przegląd Geologiczny*, **11**, 475–479. [In Polish]
- Michniak, R. and Rozanov, A.Y. 1969. New data on the lowermost Lower Cambrian in the Świętokrzyskie Mts. *Przegląd Geologiczny*, **17**, 627–628. [In Polish]
- Moczyłowska, M. 1981. Lower and Middle Cambrian acritarchs from northeastern Poland. *Precambrian Research*, **15**, 63–74.
- Moczyłowska, M. 1989. Upper Proterozoic and Lower Cambrian acritarchs from Poland – micropalaeontology, biostratigraphy and thermal study. *Lund Publications in Geology*, **75**, 1–30.
- Moczyłowska, M. 1991. Acritarch biostratigraphy of the Lower Cambrian and the Precambrian-Cambrian boundary in southeastern Poland. *Fossils and Strata*, **29**, 1–127.
- Moczyłowska, M. 1998. Cambrian acritarchs from Upper Silesia, Poland; biochronology and tectonic implications. *Fossils and Strata*, **46**, 1–121.
- Moczyłowska, M., Jensen, S., Ebbestad, J.O.R., Budd, G.E. and Martí-Mus, M. 2001. Biochronology of the autochthonous Lower Cambrian in the Laisvall-Storuman area, Swedish Caledonides. *Geological Magazine*, **138**, 435–453.
- Moczyłowska, M. and Vidal, G. 1986. Lower Cambrian acritarch zonation in southern Scandinavia and southeastern Poland. *GFF*, **108**, 201–223.

- Moczyłowska, M. and Vidal, G. 1988. Early Cambrian acritarchs from Scandinavia and Poland. *Palynology*, **12**, 1–10.
- Moczyłowska, M. and Vidal, G. 1992. Phytoplankton from the Lower Cambrian Laeså Formation on Bornholm, Denmark; biostratigraphy and palaeoenvironmental constraints. *Geological Magazine*, **129**, 17–40.
- Moczyłowska, M., Westall, F. and Foucher, F. 2014. Microstructure and biogeochemistry of the organically preserved Ediacaran metazoan *Sabellidites*. *Journal of Paleontology*, **88**, 224–239.
- Moczyłowska, M. and Yin, L. 2012. Phytoplanktic microfossils record in the lower Cambrian and their contribution to stage chronostratigraphy. *Journal of Guizhou University (Natural Sciences)*, **29**, 49–58.
- Naumova, S.N. 1960. Spore-pollen complexes of the Riphean and Lower Cambrian deposits in the SSSR. In: *Mezhdunarodnyi Geologicheskii Kongress, 21 sessiya 1960, Doklady Sovetskikh Geologov*, pp. 109–117. [In Russian]
- Nowicki, J. 2014. Redukcja wpływu deformacji tektonicznych na wyniki analizy morfometrycznej skamieniałości na przykładzie kambryjskich trylobitów. In: J. Fedorowski, B. Berkowski and A. Bodzioch (Eds), *Młodzi w Paleontologii VI: Potęga skamieniałości. Zeszyt streszczeń*. Poznań, Instytut Geologii UAM, pp. 22–23.
- Nowicki, J. 2015. Analiza izometrii wzrostu u przedstawicieli rodziny Paradoxididae Hawle et Corda, 1847 (Trilobita) z Gór Świętokrzyskich. In: *IV Ogólnopolska Konferencja Młodych Naukowców ARTHROPOD*. Katowice, 28–31 maja 2015 r. Wydział Biologii i Ochrony Środowiska UŚ w Katowicach, p. 36.
- Ogurtsova, R.N. 1977. Lontovan acritarchs of deposits of the Tommotian stage on the Olenek uplift. *International Geology Review*, **19**, 921–923. [In Russian]
- Orłowski, S. 1964. Middle Cambrian and its fauna in the eastern part of the Holy Cross Mts. *Studia Geologica Polonica*, **16**, 7–94. [In Polish with English abstract]
- Orłowski, S. 1965. A revision of the Middle Cambrian fauna from the Słowiec Hill (Holy Cross Mountains). *Biuletyn Geologiczny Wydziału Geologii*, **6**, 136–146.
- Orłowski, S. 1968a. Cambrian of the Łysogóry Anticline in the Holy Cross Mountains. *Biuletyn Geologiczny Wydziału Geologii*, **10**, 153–222. [In Polish with English abstract]
- Orłowski, S. 1968b. Upper Cambrian fauna of the Holy Cross Mts. *Acta Geologica Polonica*, **18**, 257–291.
- Orłowski, S. 1974. Lower Cambrian biostratigraphy in the Holy Cross Mts, based on the trilobite family Olenellidae. *Acta Geologica Polonica*, **24**, 1–16.
- Orłowski, S. 1975. Cambrian and Upper Precambrian lithostratigraphic units in the Holy Cross Mts. *Acta Geologica Polonica*, **25**, 432–448. [In Polish with English abstract]
- Orłowski, S. 1985a. Lower Cambrian and its trilobites in the Holy Cross Mts. *Acta Geologica Polonica*, **35**, 231–250.
- Orłowski, S. 1985b. New data on the Middle Cambrian trilobites and stratigraphy in the Holy Cross Mts. *Acta Geologica Polonica*, **35**, 251–263.
- Orłowski, S. 1987. Stratigraphy of the Lower Cambrian in the Holy Cross Mountains, Central Poland. *Bulletin of the Polish Academy of Sciences, Earth Sciences*, **35**, 91–96.
- Orłowski, S. 1988. Stratigraphy of the Cambrian System in the Holy Cross Mts. *Kwartalnik Geologiczny*, **32**, 525–532.
- Orłowski, S. 1992. Cambrian stratigraphy and stage subdivision in the Holy Cross Mountains, Poland. *Geological Magazine*, **129**, 471–474.
- Orłowski, S. and Waksmundzki, B. 1986. The oldest Hyolitha in the Lower Cambrian of the Holy Cross Mountains. *Acta Geologica Polonica*, **36**, 225–231.
- Palacios, T., Jensen, S., Barr, S.M. and White, C.E. 2014. Organic-walled microfossils from the Ediacaran-Cambrian Global Boundary Stratotype Section, Chapel Island and Random formations, Newfoundland. In: *Geological Association of Canada, Joint Annual Meeting, Program with Abstracts*, **37**, pp. 209–210.
- Palacios, T., Jensen, S., Barr, S.M., White, C.E. and Miller, R.F. 2011. New biostratigraphical constraints on the lower Cambrian Ratcliffe Brook Formation, southern New Brunswick, Canada, from organic-walled microfossils. *Stratigraphy*, **8**, 45–60.
- Palacios, T. and Vidal, G. 1992. Lower Cambrian acritarchs from northern Spain; the Precambrian-Cambrian boundary and its biostratigraphic implications. *Geological Magazine*, **129**, 421–436.
- Paskeviciene, L.T. 1980. Acritarchs of the Vendian and Cambrian boundary deposits in the East European Platform, 1–76. *Izdatel'stvo Nauka, Moscow*. [In Russian]
- Pawłowski, S. 1965. Outline of geological structure in the vicinities of Chmielnik-Tarnobrzeg. *Przegląd Geologiczny*, **13**, 238–245. [In Polish]
- Pożaryski, W. and Tomczyk, H. 1968. Assyntian orogen in south-east Poland. *Biuletyn Instytutu Geologicznego*, **237**, 13–27.
- Pożaryski, W., Vidal, G. and Brochwicz-Lewiński, W. 1981. New data on the Lower Cambrian at the southern margin of the Holy Cross Mts (SE Poland). *Bulletin de l'Académie Polonaise des Sciences, Série des Sciences de la Terre*, **29**, 167–174.
- Pusch, J.B. 1833–1836. *Geognostische Beschreibung von Polen, sowie der übrigen Nordkarpathen-Länder*. Erster Theil (1833), Zweiter Theil (1836). Stuttgart, Tübingen, J.G. Cotta'sche Buchhandlung.
- Radwański, A. 1969. Lower Tortonian transgression onto the southern slopes of the Holy Cross Mts. *Acta Geologica Polonica*, **19**, 1–164. [In Polish with English abstract]
- Samsonowicz, J. 1918. *Materiały do geologii Gór Świętokrzyskich. Odkrycie dolnego kambru w Górach Świętokrzyskich. Sprawozdania z Posiedzeń Towarzystwa*

- Naukowego Warszawskiego*, wydział III, **11** (5), 701–705.
- Samsonowicz, J. 1955. On the Upper Pre-Cambrian (Riphean) of Poland. *Bulletin de l'Académie Polonaise des Sciences, Classe troisième*, **3**, 509–511.
- Samsonowicz, J. 1959a. On the Holmia-Fauna in the Cambrian of the Anticlinorium of Klimontów. *Bulletin de l'Académie Polonaise des Sciences, Série des sciences chimiques, géologiques et géographiques*, **7**, 447–452.
- Samsonowicz, J. 1959b. On *Strenuaeva* from the Lower Cambrian in the Klimontów Anticlinorium. *Bulletin de l'Académie Polonaise des Sciences, Série des sciences chimiques, géologiques et géographiques*, **7**, 521–524.
- Samsonowicz, J. 1959c. On *Strenuella* and *Germaropyge* from the Lower Cambrian in the Klimontów Anticlinorium. *Bulletin de l'Académie Polonaise des Sciences, Série des sciences chimiques, géologiques et géographiques*, **7**, 525–529.
- Samsonowicz, J. 1960. The Lower Cambrian of the Klimontów Anticlinorium. XXI International Geological Congress. In: B. Asklund and C. Poulsen (Eds), Report of the Twenty-First Session, Norden. Part VIII, Late Pre-Cambrian and Cambrian stratigraphy, pp. 86–92. Det Berlingske Bogtrykkeri, Copenhagen.
- Samsonowicz, J. 1962. Lower Cambrian fossils from the Klimontów anticlinorium of the Holy Cross Mts., Poland. Prepared for print from the deceased author's MS notes by K. Korejwo and L. Teller. In: E. Passendorfer (Ed.), *Księga Pamiątkowa ku czci Profesora Jana Samsonowicza*, 9–29.
- Sarjeant, W.A.S. 1964. Taxonomic notes on hystrichospheres and acritarchs. *Journal of Paleontology*, **38**, 173–177.
- Siemiradzki, J. 1887. Sprawozdanie z badań geologicznych w zachodniej części gór Kielecko-Sandomierskich. *Pamiętnik Fizjograficzny*, **7**, 11–40.
- Siemiradzki, J. 1903. Geologia ziem polskich, 1. Formacje starsze do jurajskiej włącznie, 1–472. Muzeum imienia Dzieduszyckich; Lwów.
- Szczepanik, Z. 1988. *Acritarcha* from the Cambrian of the Wszachów 2 borehole in the Holy Cross Mountains. *Kwartalnik Geologiczny*, **32**, 541–554. [in Polish]
- Szczepanik, Z. 1997. Preliminary results of thermal alteration investigations of the Cambrian acritarchs in the Holy Cross Mts. *Geological Quarterly*, **41**, 257–264.
- Szczepanik, Z. 2000. The Cambrian of the western part of the Pomeranian Caledonides foreland, Peribaltic Syncline; microfloral evidence. *Geological Quarterly*, **44**, 261–273.
- Szczepanik, Z. 2001. Acritarchs from Cambrian deposits of the southern part of the Lysogóry Unit in the Holy Cross Mountains, Poland. *Geological Quarterly*, **45**, 117–130.
- Szczepanik, Z. 2007. Regionalny gradient paleotermiczny w zapisie palinologicznym starszego paleozoiku i dewonu Gór Świętokrzyskich. In: A. Żylińska (Ed.), XX Konferencja Naukowa Paleobiologów i Biostratygrafów PTG, Św. Katarzyna – materiały konferencyjne, pp. 129–132.
- Szczepanik, Z. 2009. Akritarchy kambru w podłożu miocenu SE obrzeżenia Gór Świętokrzyskich. *Posiedzenia Naukowe PIG*, **65** [for 2008], on-line version, 28–31.
- Szczepanik, Z., Trela, W. and Salwa, S. 2004a. Upper Cambrian in the Kielce Region of the Holy Cross Mts. – preliminary report. *Przegląd Geologiczny*, **52**, 895–898. [In Polish]
- Szczepanik, Z., Trela, W., Żylińska, A. and Salwa, S. 2004b. Nowe kambryjskie i ordowickie jednostki litostratigraficzne w regionie kieleckim Gór Świętokrzyskich. *Posiedzenia Naukowe PIG*, **61**, 57–58.
- Szczepanik, Z. and Żylińska, A. 2008. Korelacja trylobitowych i akritarchowych poziomów biostratigraficznych furongu (kambr górny) w regionie łysogórskim Gór Świętokrzyskich. In: G. Haczewski (Ed.), Pierwszy Polski Kongres Geologiczny, Kraków 26–28 czerwca 2008, Abstrakty, p. 119.
- Szczepanik, Z. and Żylińska, A. 2012. Datowania skał kambryjskich okolic Klimontowa za pomocą trylobitów i akritarch. In: W. Mizerski and B. Żbikowska [Eds], Geologia jedna?! II Polski Kongres Geologiczny, Abstrakty, p. 86.
- Tynni, R. 1982. New results of studies on the fossils in the Lower Cambrian sediment deposit of the Söderfjärden Basin. *Bulletin of the Geological Society of Finland*, **54**, 57–68.
- Umnova, N.I. and Vanderflit, E.K. 1971. Acritarch assemblages from the Cambrian of the Western and north-western part of the Russian Platform. In: *Palinologičeskije issledovanija v Belorussi i drugikh rayonakh SSSR*, 45–73. Izdatel'stvo Nauka i Tekhnika, Minsk. [In Russian]
- Vanguetstaine, M. 1992. Biostratigraphie par acritarches du Cambro-Ordovicien de Belgique et des régions limitrophes: synthèse et perspectives d'avenir. *Annales de la Société géologique de Belgique*, **115**, 1–18.
- Vavrdová, M. 2006. Two benthic microbial assemblages from the Menin-1 borehole (Early Cambrian, Czech Republic). *Bulletin of Geosciences*, **81**, 115–122.
- Vavrdová, M. and Beck, J.H. 2001. Further palynomorphs of Early Cambrian age from clastic sediments underlying the Moravian Devonian (borehole Nemcicky-3). *Bulletin of Geosciences*, **76**, 113–115.
- Vavrdová, M., Mikuláš, R., and Nehyba, S. 2003. Lower Cambrian siliciclastic sediments in Southern Moravia (Czech Republic) and their paleogeographical constraints. *Geologica Carpathica*, **54**, 67–79.
- Vidal, G. 1981. Lower Cambrian acritarch stratigraphy in Scandinavia. *GFF*, **103**, 183–192.
- Vidal, G. and Moczyłowska, M. 1996. Vendian-Lower Cambrian acritarch biostratigraphy of the central Caledonian fold belt in Scandinavia and the palaeogeography of the Iapetus-Tornquist Seaway. *Norsk Geologisk Tidsskrift*, **76**, 147–168.

- Vidal, G., Moczyłowska, M. and Rudavskaya, V.A. 1995. Constraints on the Early Cambrian radiation and correlation of the Tommotian and Nemakit-Daldynian regional stages of eastern Siberia. *Journal of the Geological Society of London*, **152**, 499–510.
- Vidal, G. and Nystuen, J.P. 1990. Lower Cambrian acritarchs and the Proterozoic-Cambrian boundary in Southern Norway. *Norsk Geologisk Tidsskrift*, **70**, 191–222.
- Volkova, N.A. 1968. Acritarchs from Precambrian and Lower Cambrian deposits of Estonia. In: Problematika pogranichnykh sloev rifeya i kembriya Russkoy platformy, Urala i Kazakhstana. *Akademiya Nauk SSSR, Trudy Geologicheskogo Instituta*, **188**, 8–48. [In Russian]
- Volkova, N.A. 1969. Acritarchs of the northwestern Russian Platform. In: A.Yu. Rozanov *et al.* (Eds), Tommotski yarus i problema nizhney granitsy kembriya. *Akademiya Nauk SSSR, Trudy Geologicheskogo Instituta*, **206**, 224–236. [In Russian]
- Volkova, N.A. 1996. Acritarch complexes of the Cambrian of the Moscow Syncline. *Byulleten Moskovskogo Obshchestva Ispytateley Prirody*, **71**, 51–57. [In Russian]
- Volkova, N.A., Kiryanov, V.V., Piskun, L.V., Pashkyavichene, L.T. and Yankauskas, T.V. 1979. Plant microfossils. In: B.M. Keller and A.Yu. Rozanov (Eds), Paleontologiya verkhnedokembriyskikh i kembriyskikh otlozeniy Vostochno-Evropeyskoy platformy, pp. 4–38. Izdatel'stvo Nauka, Moscow. [In Russian]
- Volkova, N.A., Kiryanov, V.V., Piskun, L.V., Paškevičiene, L.T. and Jankauskas, T.V. 1983. Plant microfossils. In: A. Urbanek and A.Yu. Rozanov (Eds), Upper Precambrian and Cambrian Palaeontology of the East-European Platform, pp. 7–46. Wydawnictwa Geologiczne; Warszawa.
- Yankauskas, T.V. 1972. Biostratigraphy of the Lower Cambrian of Lithuania (based on acritarchs). *Doklady Akademii Nauk SSSR*, **205**, 1186–1189. [In Russian]
- Yankauskas, T.V. 1975. New acritarchs from the Lower Cambrian of the Baltic Region. *Paleontologicheskij Zhurnal*, **1**, 94–104. [In Russian]
- Yankauskas, T.V. and Posti, E.A. 1976. New species of Acritarcha from the Cambrian of the Baltic Region. *Izvestnik Akademii Nauk Estonskoy SSR*, **25**, 145–150. [In Russian]
- Zang, W.L. 1992. Sinian and Early Cambrian floras and biostratigraphy on the South China Platform. *Palaeontographica, Abteilung B*, **224**(4–6), 75–119.
- Zang, W.L., Moczyłowska, M. and Jago, J.B. 2007. Early Cambrian acritarch Assemblage Zones in South Australia and global correlation. *Memoirs of the Association of Australasian Palaeontologists*, **33**, 141–177.
- Żak, Cz. 1963. Wstępne wyniki wiercenia w Bazowie. *Kwartalnik Geologiczny*, **7**, 566–567.
- Żak, Cz. 1965. Wyniki badań otworu wiertniczego Bazów IG-1. *Kwartalnik Geologiczny*, **9**, 461–463.
- Żak, Cz. 1966. Problem granicy kambru z eokambrem w Górach Świętokrzyskich. *Kwartalnik Geologiczny*, **10**, 1175–1177.
- Żakowa, H. and Jagielska, L. 1970. The oldest fossils of Lower Cambrian age in the Świętokrzyskie Mts. *Kwartalnik Geologiczny*, **14**, 9–27. [In Polish]
- Żylińska, A. 2001. Late Cambrian trilobites from the Holy Cross Mountains, central Poland. *Acta Geologica Polonica*, **51**, 333–383.
- Żylińska, A. 2002. Stratigraphic and biogeographic significance of Late Cambrian trilobites from Łysogóry (Holy Cross Mountains, central Poland). *Acta Geologica Polonica*, **52**, 217–238.
- Żylińska, A. 2013a. Evolution of trilobite assemblages from Cambrian Series 2 and 3 of the Holy Cross Mountains and their biogeographic significance. *Przegląd Geologiczny*, **61**, 30–39. [In Polish]
- Żylińska, A. 2013b. The oldest Cambrian trilobites in the Holy Cross Mountains, Poland: taxonomic, stratigraphic and biogeographic reappraisal. *Acta Geologica Polonica*, **63**, 57–87.
- Żylińska, A., Kin, A. and Nowicki, J. 2013. Application of morphometric techniques for taxonomic revision of *Berabichia oratrix* (Orłowski, 1985) (Trilobita, Cambrian) from the Holy Cross Mountains, Poland. *Geodiversitas*, **35**, 505–528.
- Żylińska, A. and Masiak, M. 2007. Cambrian trilobites from Brzechów, Holy Cross Mountains (Poland) and their significance in stratigraphic correlation and biogeographic reconstructions. *Geological Magazine*, **144**, 661–686.
- Żylińska, A. and Szczepanik, Z. 2002. The relationship between acritarch and trilobite biozones from the Upper Cambrian of the Holy Cross Mountains, Poland – a preliminary report. In: J.J. Alvaro and S. Clausen (Eds), VIII Conference of the Cambrian Stage Subdivision Working Group, ISCS, Caunes-Minervois, Languedoc, September 12–14 2002. Programme and Abstracts, p. 41.
- Żylińska, A. and Szczepanik, Z. 2009. Trilobite and acritarch assemblages from the Lower-Middle Cambrian boundary interval in the Holy Cross Mountains (Poland). *Acta Geologica Polonica*, **59**, 413–458.
- Żylińska, A., Szczepanik, Z. and Salwa, S. 2006. Cambrian of the Holy Cross Mountains, Poland; biostratigraphy of the Wiśniówka Hill succession. *Acta Geologica Polonica*, **56**, 443–461.

PLATES 1–4

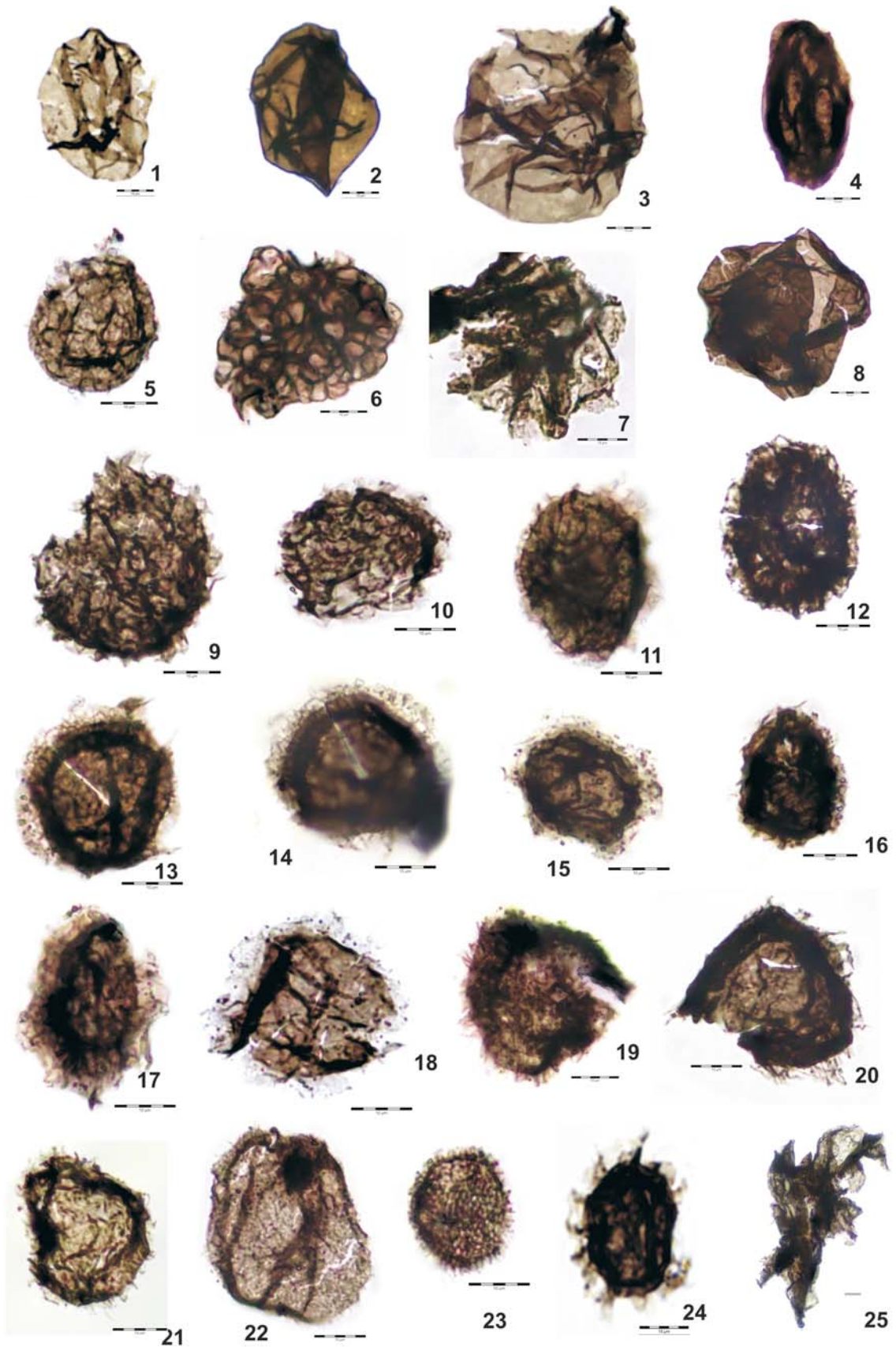
## PLATE 1

Acritarchs from local assemblage 1, Locality 1, south of Kotuszów, Holy Cross Mountains; transition from Terreneuvian to Cambrian Stage 2

- 1-4** – *Leiosphaeridia* sp., 1 – 4992 C38\_1; 2 – 4992 D36\_1; 3 – 4992z E31\_4; 4 – 4992z Q31\_2  
**5** – ?*Leiosphaeridia* sp., 4992z T29  
**6** – *Synsphaeridium* sp., 4992z N30\_3  
**7** – *Liepaina* sp., 4992 Q43\_4  
**8** – *Pulvinosphaeridium* sp., 4992 L22\_3  
**9-10** – *Fimbriaglomerella membranacea* (Kiryanov) Moczydłowska and Vidal, 1988, 9 – 4992 A25; 10 – 4992 K40  
**11-12** – *Fimbriaglomerella* sp., 11 – 4992z J35\_4; 12 – 4992 D29\_4  
**13-14** – *Comasphaeridium* cf. *velvetum* Moczydłowska, 1991, 13 – 4992z O30; 14 – 4992z O30\_3  
**15-16** – *Granomarginata prima* Naumova, 1960, 4992; 15 E38\_3; 16 T439\_4  
**17-18** – *Granomarginata squamacea* Volkova, 1968, 17 – 4992z O31\_4; 18 – 4992 R38\_3  
**19** – *Comasphaeridium* cf. *agglutinatum* Moczydłowska, 1991, 4992 O29  
**20** – *Comasphaeridium* cf. *strigosum* (Yankauskas) Downie, 1982, 4992 043\_2  
**21** – *Comasphaeridium* sp.; 4992 S24\_1  
**22** – *Lophosphaeridium tentativum* Volkova, 1968, 4992 Z44  
**23** – *Asteridium tornatum* (Volkova) Moczydłowska, 1991, 4992 Z44\_3  
**24** – *Pterospermella vitalis* Yankauskas in Volkova *et al.*, 1979, 4992 B40\_2  
**25** – ? Cyanobacteria, 4989 E41\_3, 4992 Y43\_2

Symbols refer to number of slide and location of specimen according to England Finder. Scale bar equals 10 µm



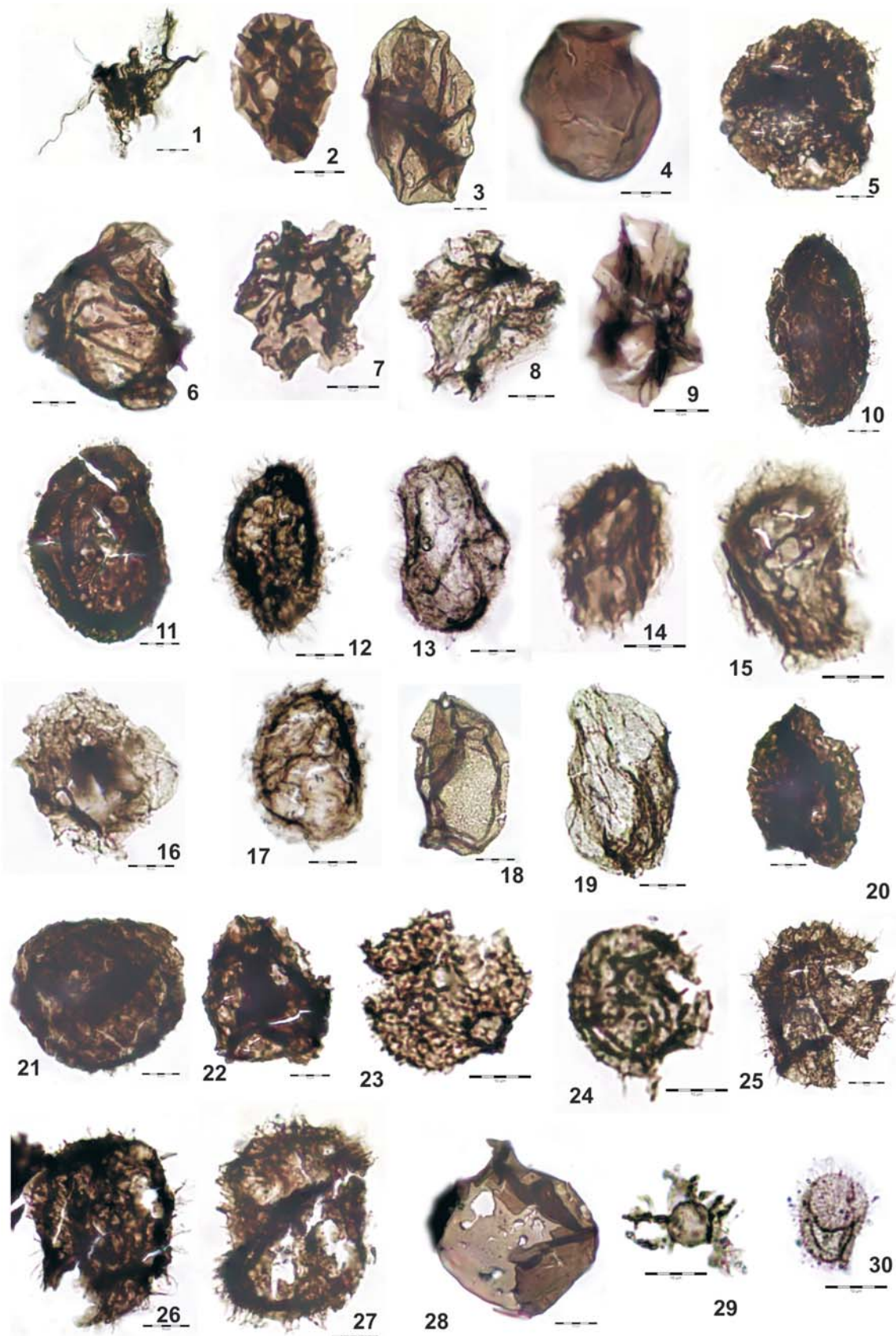


## PLATE 2

Acritarchs from local assemblage 2, Locality 3, east of Kotuszów, Holy Cross Mountains; Cambrian Stage 2

- 1 – Cyanobacteria, 4989 E41\_3  
2-3 – *Leiosphaeridia* sp., 2 – 4989 E40\_3; 3 – 4989 V49  
4 – ?*Leiosphaeridia* sp., 4989 L32\_3  
5 – *Tasmanites* sp., 4989 M35  
6-8 – Gen. indet. 1, 6 – 4989 K39\_2; 7 – 4989 E34\_3; 8 – 4989 H46\_1  
9 – *Cymatiosphaera* sp., 4989 L50  
10-11 – ?*Comasphaeridium* sp., 10 – 4989 J33; 11 – 4989 J39  
12 – *Comasphaeridium mollicum* Moczydłowska and Vidal, 1988, 4989 Q37  
13 – *Comasphaeridium strigosum* (Yankauskas) Downie, 1982, 4989 L34\_2  
14 – *Granomarginata* cf. *prima* Naumova, 1960, 4989 K43  
15 – *Granomarginata* cf. *squamacea* Volkova, 1968, 4989 U39\_4  
16 – *Granomarginata squamacea* Volkova, 1968, 4989 D32  
17 – *Fimbriaglomerella* cf. *membranacea* (Kiryanov) Moczydłowska and Vidal, 1988, 4989 D31  
18-19 – *Lophosphaeridium tentativum* Volkova, 1968, 18 – 4989 N35; 19 – 4989 X30  
20-23 – *Lophosphaeridium truncatum* Volkova, 1969, 20 – 4989 J30; 21 – 4989 H29\_4; 22 – 4989 O50; 23 – 4989 H48  
24-27 – *Globosphaeridium cerinum* (Volkova) Moczydłowska, 1991, 24 – 4989 U26; 25 – 4989 Z39\_2; 26 – 4989 Y46; 27 – 4989 O55  
28 – *Alliumella baltica* Vanderflit in Umnova and Vanderflit, 1971, 4989 N38  
29 – *Heliosphaeridium* cf. *longum* (Moczydłowska) Moczydłowska, 1991, 4989 Z37  
30 – *Asteridium lanatum* (Volkova) Moczydłowska, 1991, 4989 P41

Symbols refer to number of slide and location of specimen according to England Finder. Scale bar equals 10 µm

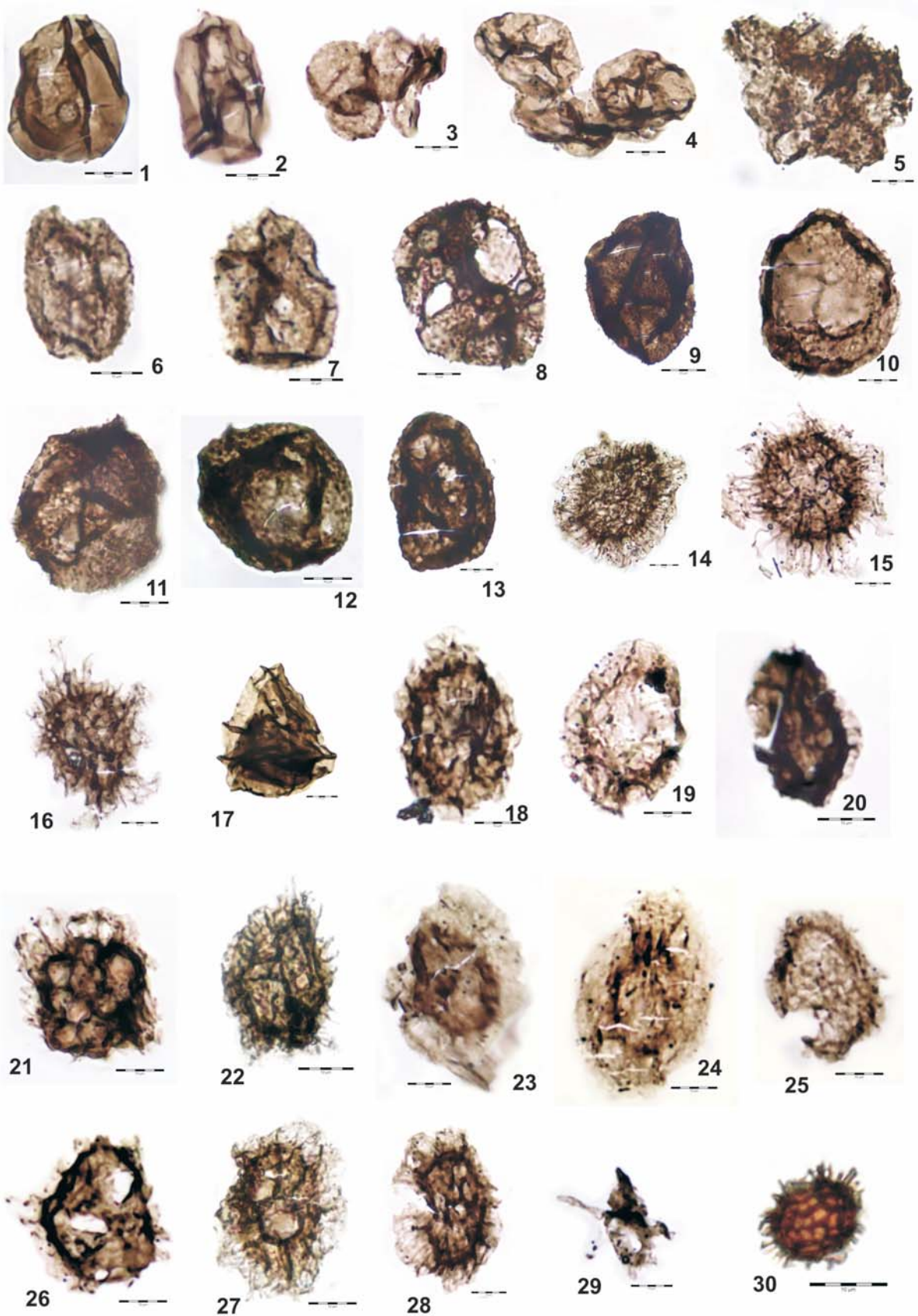


## PLATE 3

Acritarchs from local assemblage 2, Locality 4, north of Kotuszów, Holy Cross Mountains; Cambrian Stage 2

- 1-2 – *Leiosphaeridia* sp., 1 – 4990n B49\_2; 2 – 4990n C45  
3-4 – *Synsphaeridium* sp., 3 – 4990n E44\_2; 4 – 4990n G39  
5 – *Asteridium* sp., 4990n E44\_4  
6-7 – *Lophosphaeridium tentativum* Volkova, 1968, 6 – 4990n B48; 7 – 4990n U27  
8, 10 – *Lophosphaeridium dubium* (Volkova) Moczyłowska, 1991, 8 – 4990n M26\_1;  
10 – 4990n G36\_2  
9 – *Lophosphaeridium* cf. *dubium* (Volkova) Moczyłowska, 1991, 4990n W31\_3  
11-13 – *Lophosphaeridium truncatum* Volkova, 1969, 11 – 4990n M43\_2; 12 – 4990n X30\_3; 13 – 4990n T44\_4  
14 – *Comasphaeridium strigosum* (Yankauskas) Downie, 1982, 4990n Z50\_2  
15 – *Comasphaeridium mollicum* Moczyłowska and Vidal, 1988, 4990n F48  
16 – *Comasphaeridium* sp., 4990n L31\_3  
17 – *Cymatiosphaera* sp., 4990n W50\_3  
18-20 – *Fimbriaglomerella* cf. *membranacea* (Kiryanov) Moczyłowska and Vidal, 1988,  
18 – 4990n W40; 19 – 4990n F37\_2; 20 – 4990n Q46  
21 – ?*Skiagia* sp., 4990n K40\_4  
22 – ?*Ichnosphaera* sp., 4990n A51 margin  
23-24 – *Granomarginata squamacea* Volkova, 1968, 23 – 4990n Q28; 24 – 4990n U37\_3  
25 – *Granomarginata prima* Naumova, 1960, 4990n T33\_4  
26 – *Pterospermella* cf. *solida* (Volkova) Volkova in Volkova *et al.*, 1979, 4990n S30\_4  
27-28 – *Pterospermella vitalis* Yankauskas, 1979, 27 – 4990n A30 margin; 28 – 4990n S41  
29 – *Heliosphaeridium* cf. *longum* (Moczyłowska) Moczyłowska, 1991, 4990n P32\_1  
30 – ?*Heliosphaeridium* sp., 4990n P39\_2

Symbols refer to number of slide and location of specimen according to England Finder. Scale bar equals 10  $\mu$ m



## PLATE 4

Acritarchs from local assemblage 3, Locality 5, north-east of Kotuszów, Holy Cross Mountains; Cambrian Stage 2

- 1** – *Cyanobacteria*, 7535 H53\_4  
**2** – *Pterospermopsimorpha* sp., 7535B G38\_1  
**3-4** – *Leiosphaeridia* sp., 3 – 7535, D41\_3; 4 – 7516 G37\_A\*  
**5** – *Fimbriaglomerella* sp., 7516 G37\_B  
**6** – *Comasphaeridium* cf. *velvetum* Moczydłowska, 1991, 7535 K50\_3  
**7** – *Lophosphaeridium tentativum* Volkova, 1968, 7535B J26\_2  
**8** – ?*Lophosphaeridium* sp., 7535 L36\_3  
**9, 11-12** – *Lophosphaeridium* cf. *dubium* (Volkova) Moczydłowska, 1991, 9 – 4990n W31\_3; 11 – 7535 R43\_2; 12 – 7535 E49\_2  
**10, 13** – *Lophosphaeridium truncatum* Volkova, 1969, 10 – 7516 Q30\_3; 13 – 7535B U36  
**14** – *Comasphaeridium* cf. *strigosum* (Yankauskas) Downie, 1982, 7535B P34  
**15** – *Asteridium tornatum* (Volkova) Moczydłowska, 1991, 7518 O38\_1  
**16** – *Retisphaeridium* sp., 7535 L39\_4  
**17-20, 26** – *Fimbriaglomerella* cf. *membranacea* (Kiryanov) Moczydłowska and Vidal, 1988, 17 – 7535B M30; 18 – 7535 40\_2; 19 – 7535 F38\_3; 20 – 7535B F31; 26 – 7535B P40  
**21-23** – *Granomarginata squamacea* Volkova, 1968, 21 – 7535B Q40; 22 – 7535 H39; 23 – 7535B Q40  
**24** – *Pterospermella vitalis* Yankauskas in Volkova *et al.*, 1979, 7516 M43\_2  
**25** – *Pterospermella* cf. *vitalis* Yankauskas in Volkova *et al.*, 1979, 7535 H45\_2  
**27-28** – *Globosphaeridium* cf. *cerinum* (Volkova) Moczydłowska, 1991, 27 – 7535B H41\_2; 28 – 7516 Q35\_4  
**29, 34** – *Skiagia ornata* (Volkova) Downie, 1982, 29 – 7535B T39; 34 – 7518Z Q27  
**30** – *Comasphaeridium strigosum* (Yankauskas) Downie, 1982, 7535B J31  
**31, 33** – *Skiagia* cf. *orbiculare* (Volkova) Downie, 1982, 31 – 7516 S37; 33 – 7535 H36\_2  
**32** – ?*Ichnosphaera* sp., 7535B Q30  
**35-36** – *Skiagia* cf. *ornata* (Volkova) Downie, 1982, 35 – 7516 T41\_2; 36 – 7516B Q34

Symbols refer to number of slide and location of specimen according to England Finder. Scale bar equals 10 µm

